

DDRII-Pre MV BUILD

2008.06.18

www.vinafix.vn

1	2	3	4	5	6	7	8
A							
B							
C							
D							
E							
F							

TETON2

DDRILL-Pre MV BUILD

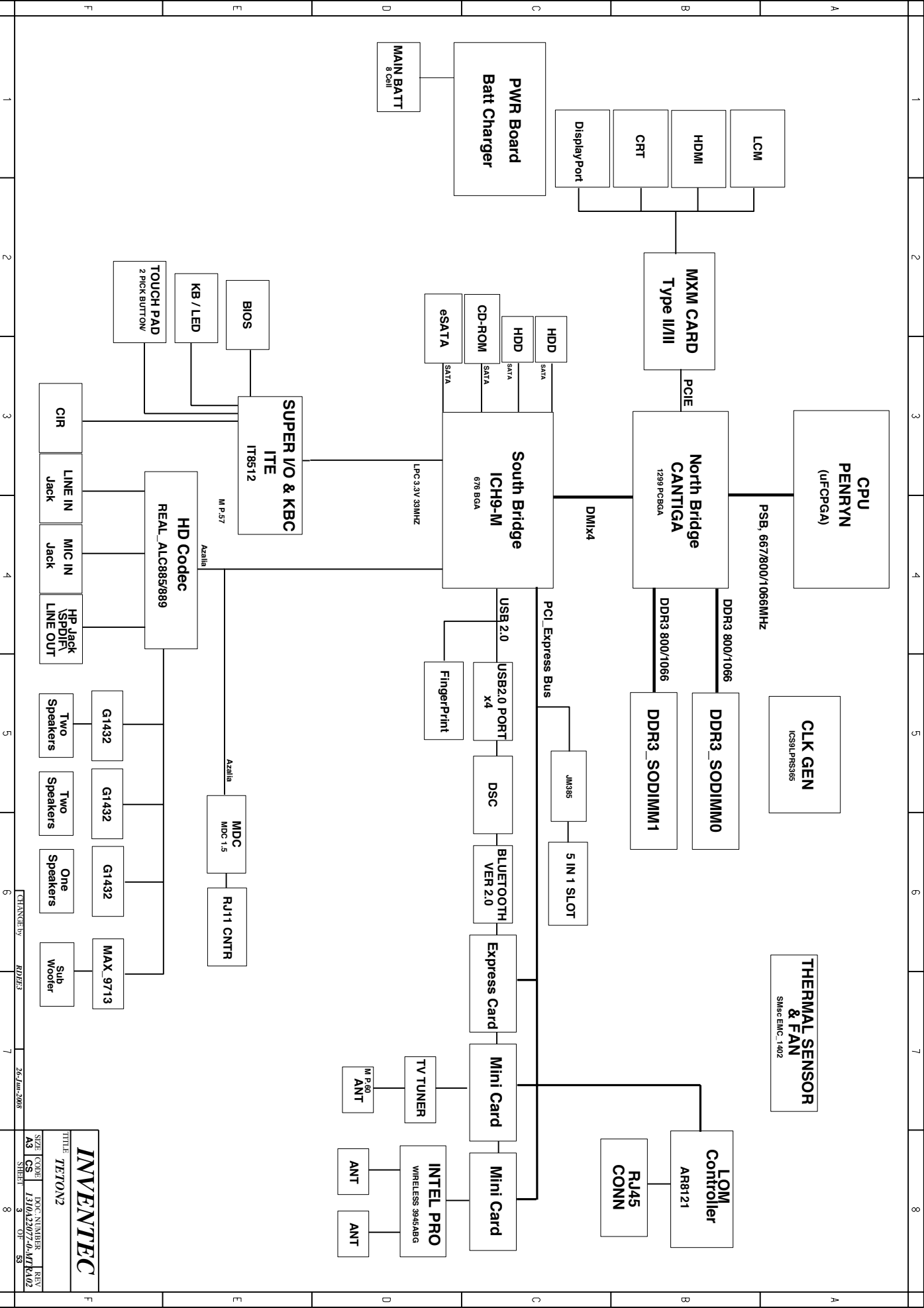
2008.06.18

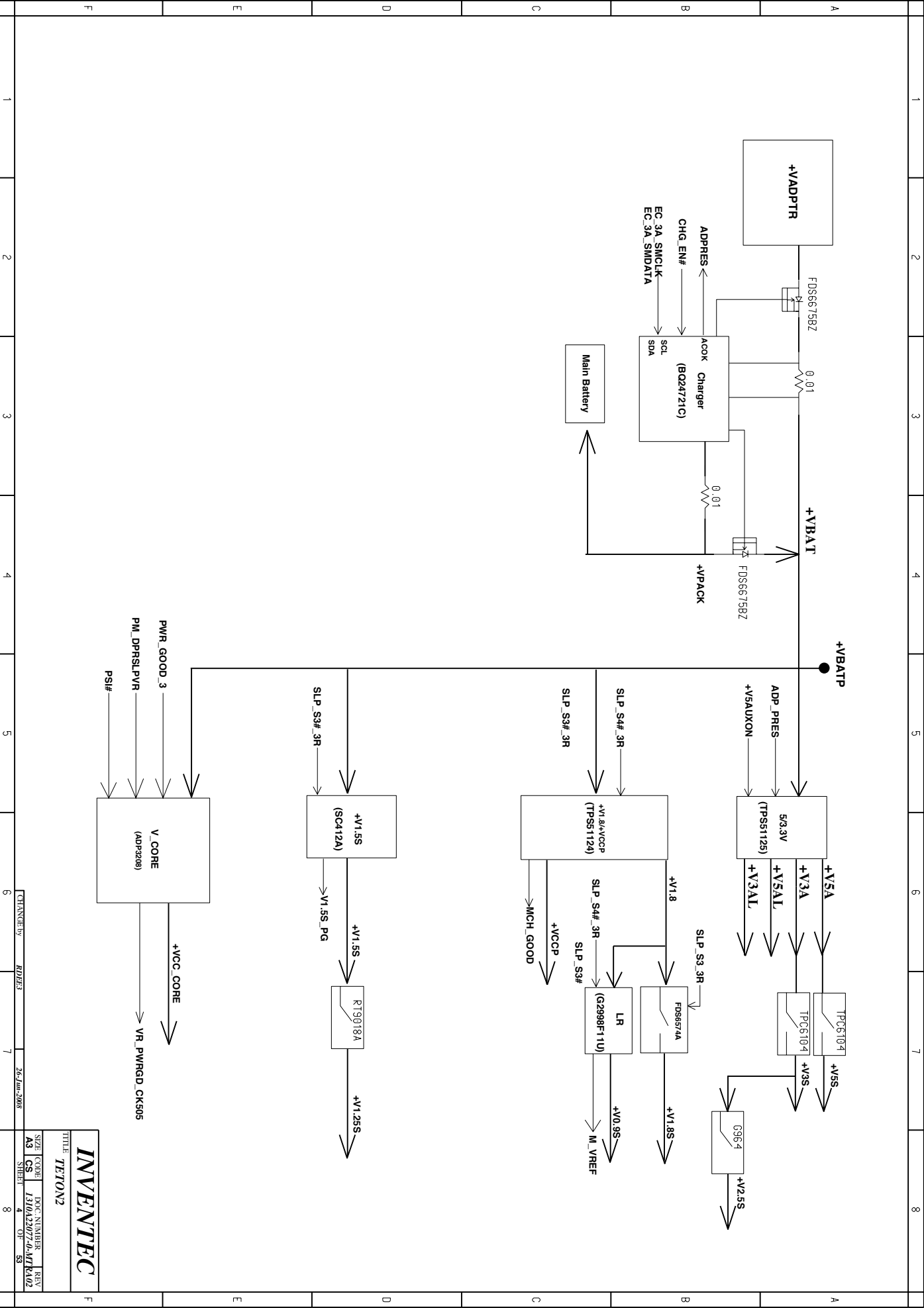
DATE	1	2	3	4	5	6	7	8
CHANGE NO.								
REV								

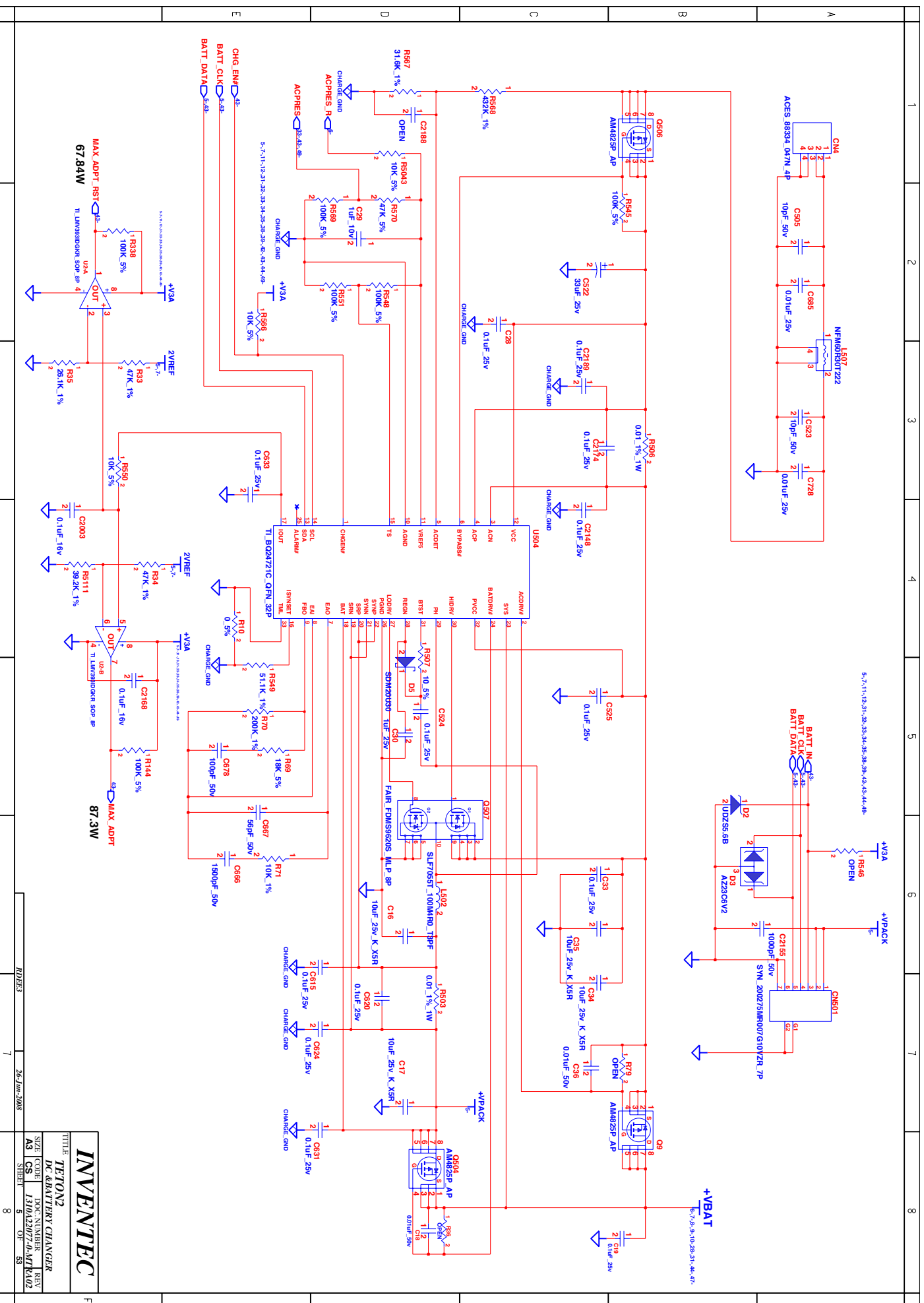
DESIGNER	EE	DATE	POWER	DATE
DESIGN				
CHECK				
RESPONSIBLE				
SIZE =	3	VER:		
FILE NAME:	XXXX XXXXX.XX			
PIN	XXXXXXXXXXXX			

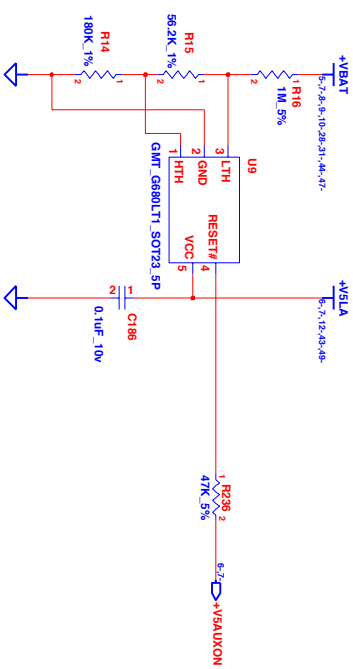
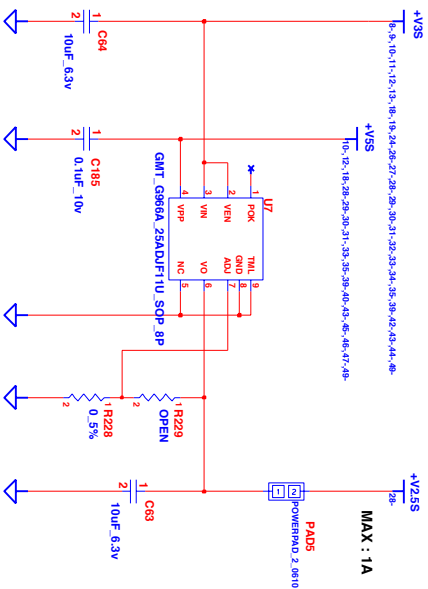
INVENTEC	
TITLE TETON2	
SIZE CODE	DOC NUMBER
A3 CS	1310A23077-0-MTR4102
SHEET	1 OF 59

A	TABLE OF CONTENTS							
B	PAGE		PAGE		PAGE			
	MAINBOARD				I/O BOARD			
	1.COVER PAGE		40.SATA HDD&ODD		1.EXPRESS CARD CONN			
	2.INDEX		41.USB CONN & eSATA		2.CARD READER CONTROLLER			
	3.BLOCK DIAGRAM		42.BLUE TOOTH & MDC CONN		HOTKEY BOARD			
	4.POWER SEQUENCE BLOCK		43.KBC		1.HOTKEY BOARD			
	5-12.SYSTEM POWER		44.AUDIO CODEC					
	13.CLOCK GENERATOR		45.AUDIO JACK					
	14-17.CPU Merom		46.AUDIO AMP					
	18.FAN & THERMAL CONTROLLER		47.AUDIO AMP & SPK CONN					
	19-25.N/B Crestline		48.SCREW					
	26.DDR3 DIMM0		49.MB TO OTHER B CONN					
	27.DDR3 DIMM1		50.USB BOARD					
	28.MXM CONN		51.POWER BUTTON BOARD					
	29.CRT CONN		52.TP BUTTON BOARD					
	30.HDMI & DP CONN		53.HINGE LED BOARD 1 & 2					
	31.LCD CONN							
	32-36.S/B ICH8M							
	37.LAN CONTROLLER							
	38.RJ45 CONN							
	39.MINI CARD							
<div>INVENTEC TETON2</div> <div>SIZE CODE DOC NUMBER REV A3 CS 1310A2007-4-MT K102</div> <div>SHEET 2 OF 35</div>								
F	1	2	3	4	5	6	7	8

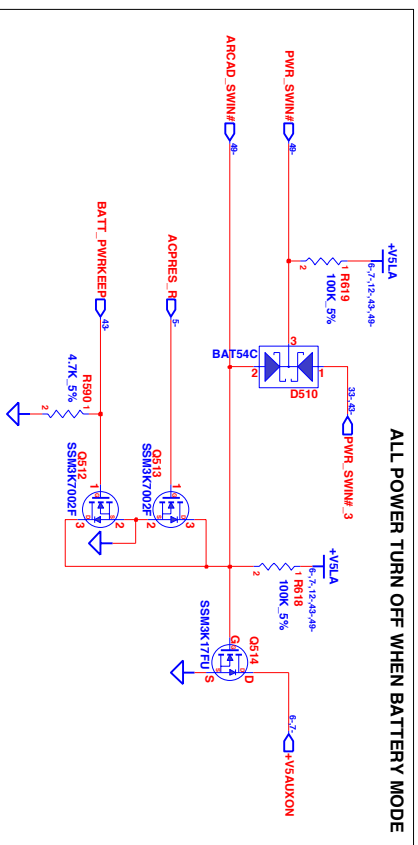








ALL POWER TURN OFF WHEN BATTERY MODE



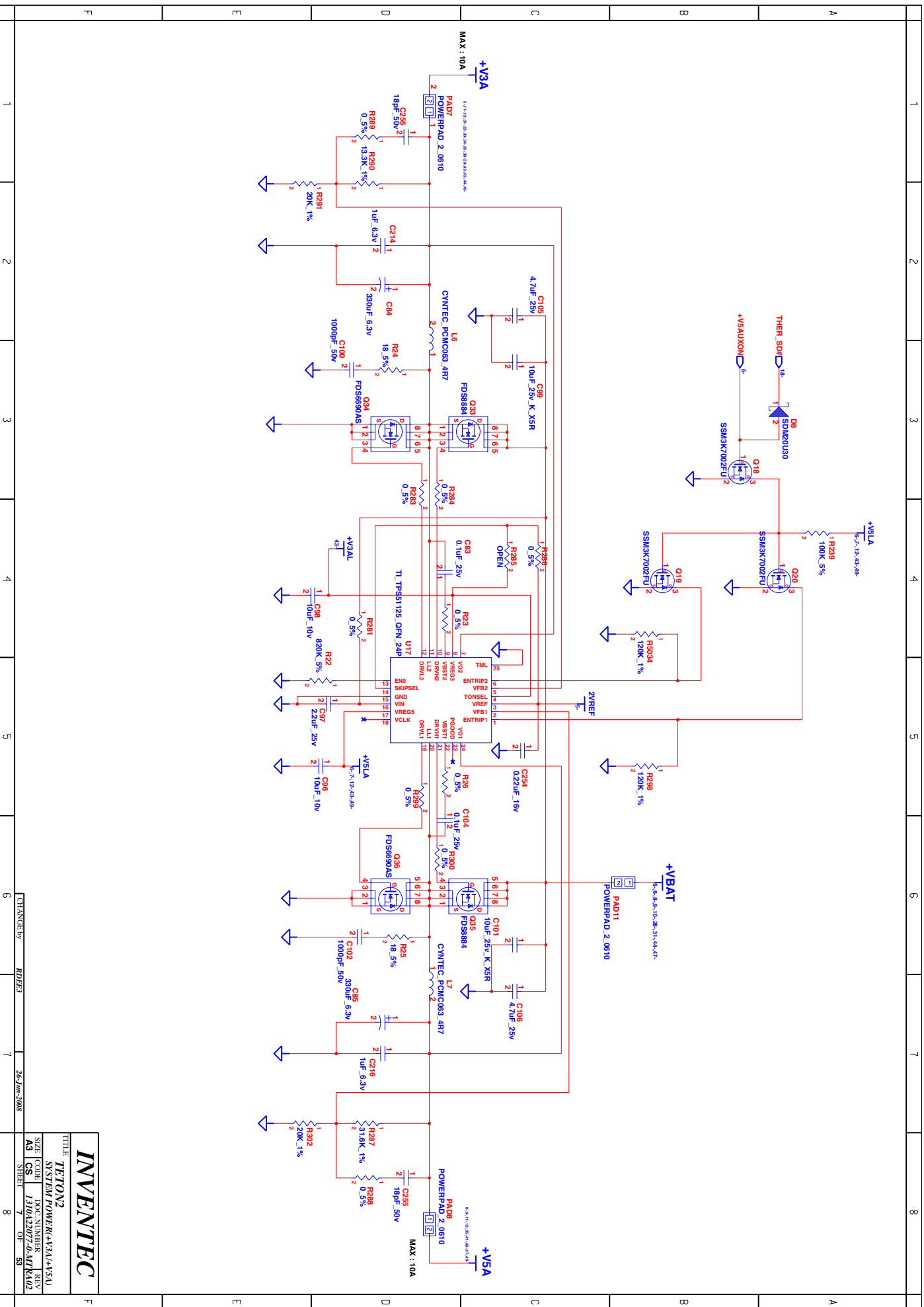
INVENTEC

TETON2

+V2.5S/ RESET

SIZE CODE DOC:NUMBER REV
A3 CS 1310A200724-MT Ka02

SHEET 6 OF 35



INVENTEC

TE/TON2

SYSTEM POWER(+V3A/+V5A)

SIZE CODE DOC NUMBER REV

A3 CS 1310A23077-2b-47KA02

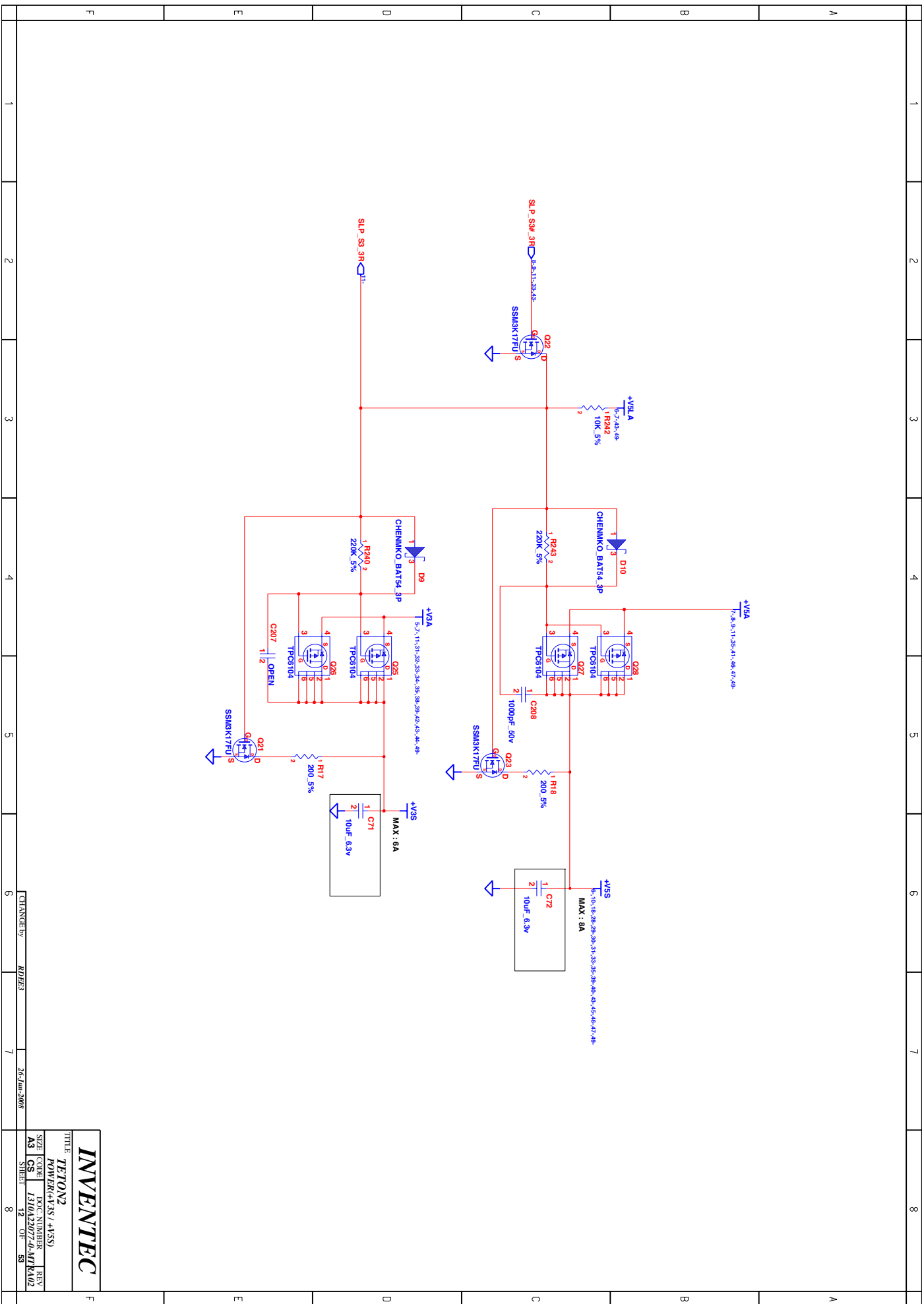
SHEET 7 OF 33

CHANGED BY RDP/3

26-Jun-2008



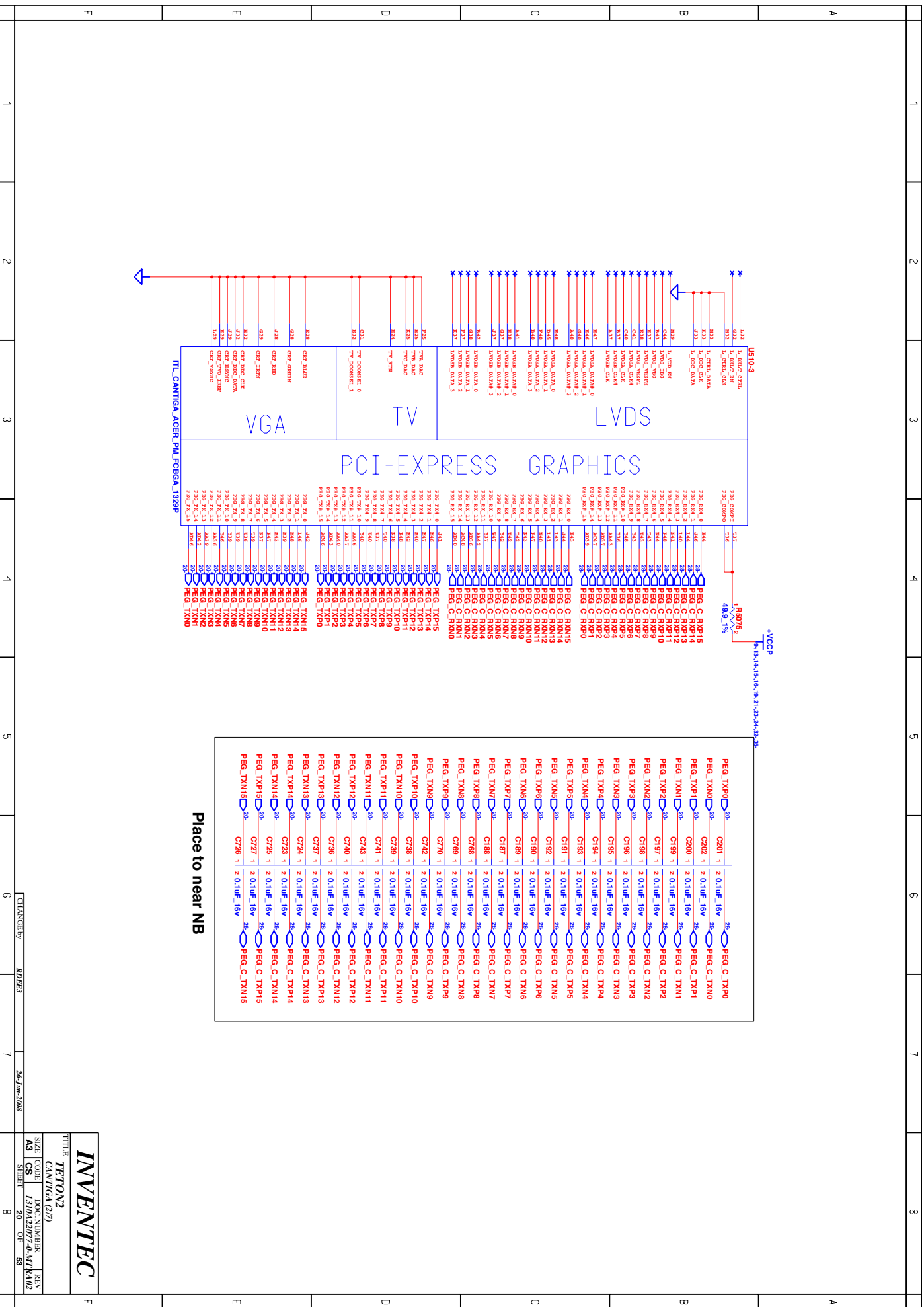
TITLE		INVENTEC	
TETON2			
SYSTEM POWER(+1.5+ACCIP)			
DESIGNED BY		REV	
A3	CS	13104.22077-d-MTR	002
DATE	SHEET	9	OF 53
DRAWN BY		RHE:J	
CHECKED BY		26-Jun-2008	
APPROVED BY			
1	2	3	4
5	6	7	8



1	2	3	4	5	6	7	8
---	---	---	---	---	---	---	---

INVENTEC	
TITLE	TETON2
POWER(+V5S / +V5S)	
SIZE (CODE)	DOC. NUMBER
A3	CS
1310A2207-0-07	REV
SHEET	12
OF	53

CHANGE by R0123 26-10-2008

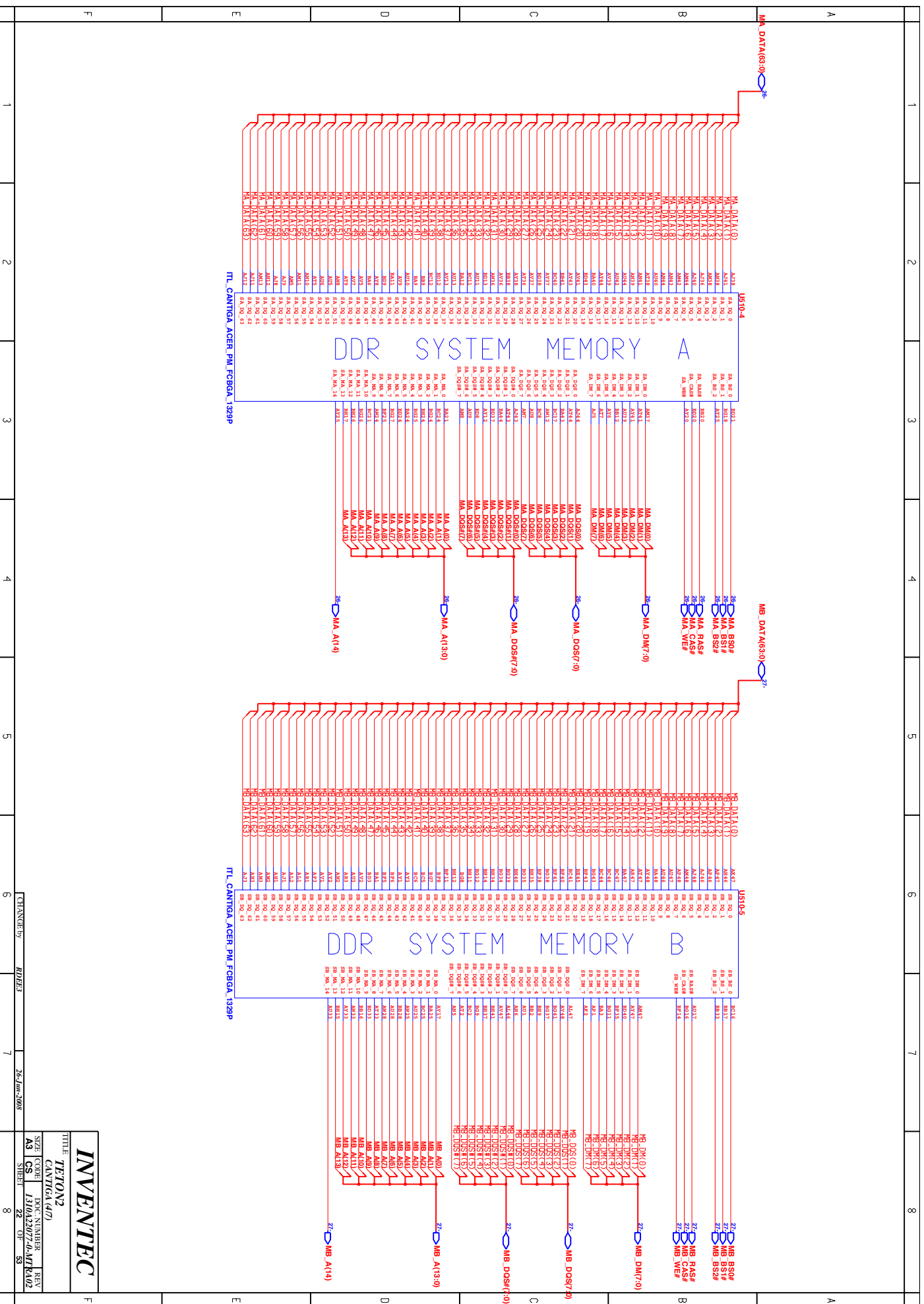


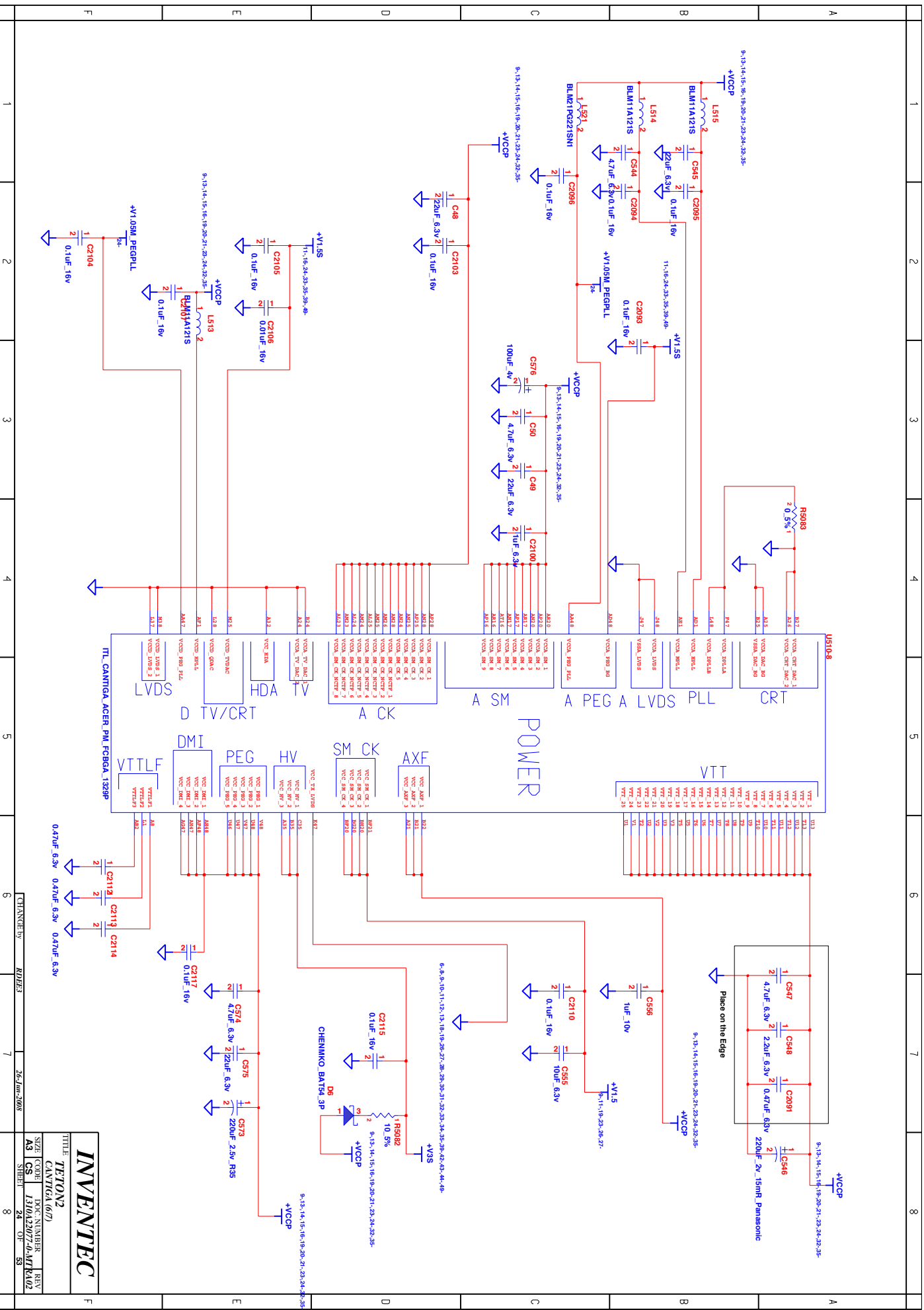
INVENTEC

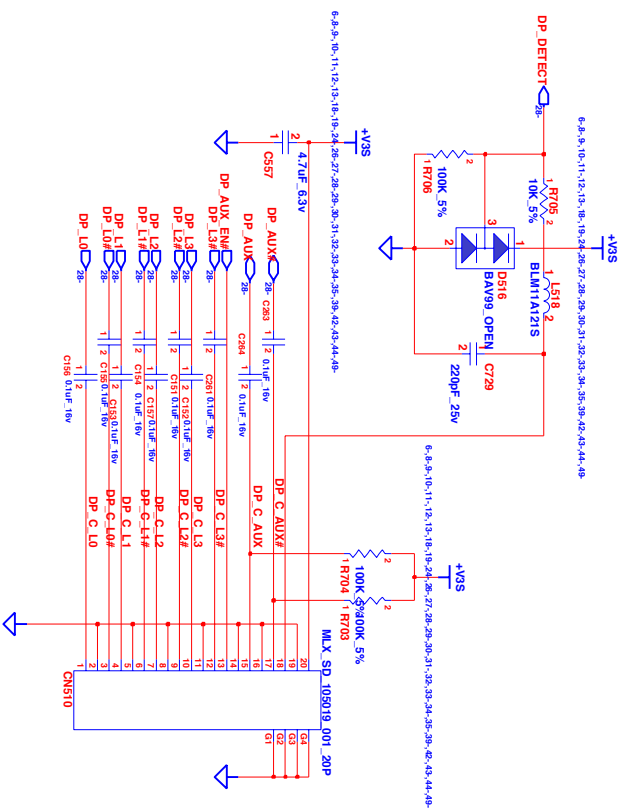
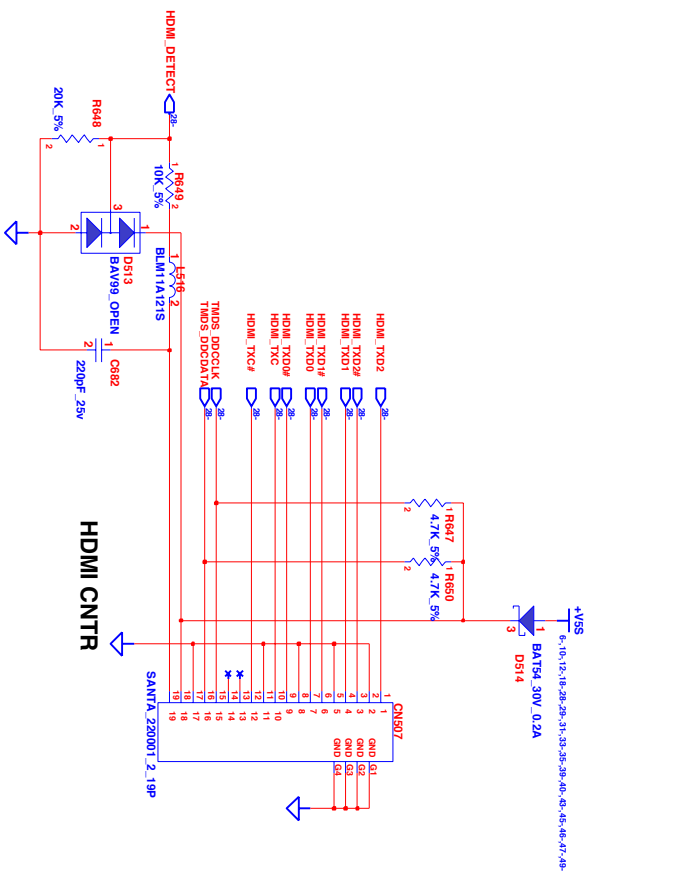
TEION2

CANTIGA (27)

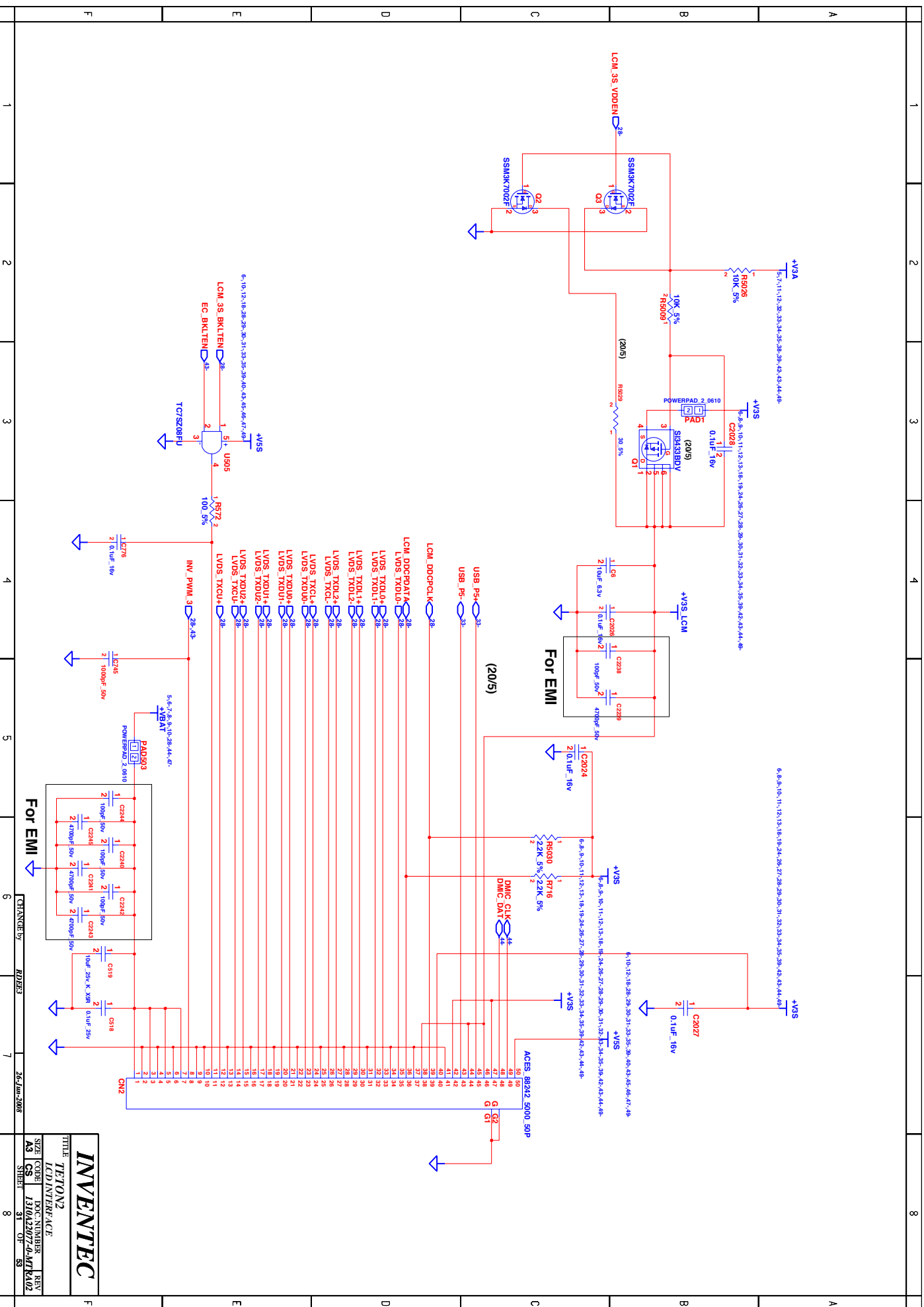
SIZE CODE DOC:NUMBER REV
A3 CS 1310A2077-4-MT K102
SHEET 20 OF 35

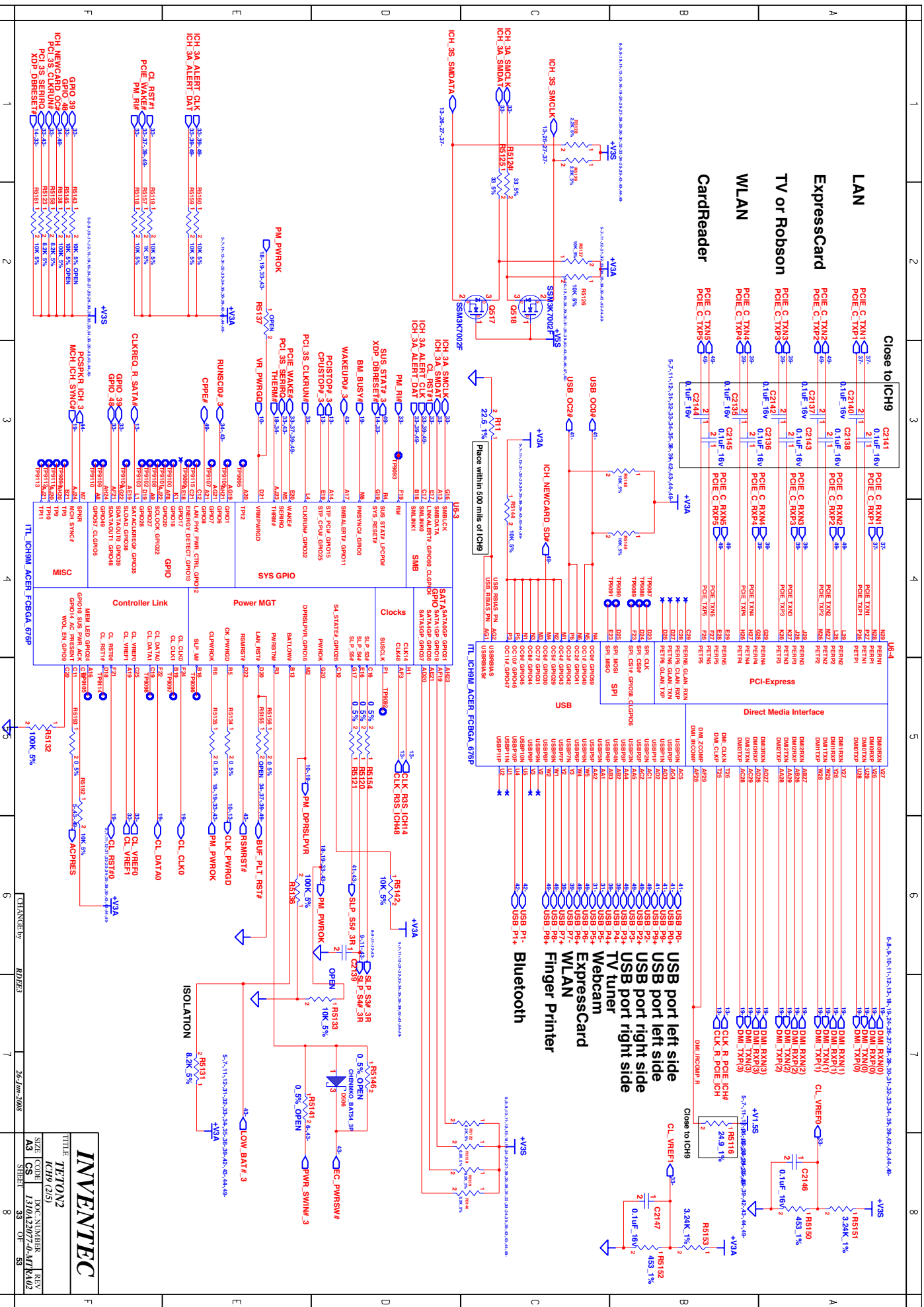


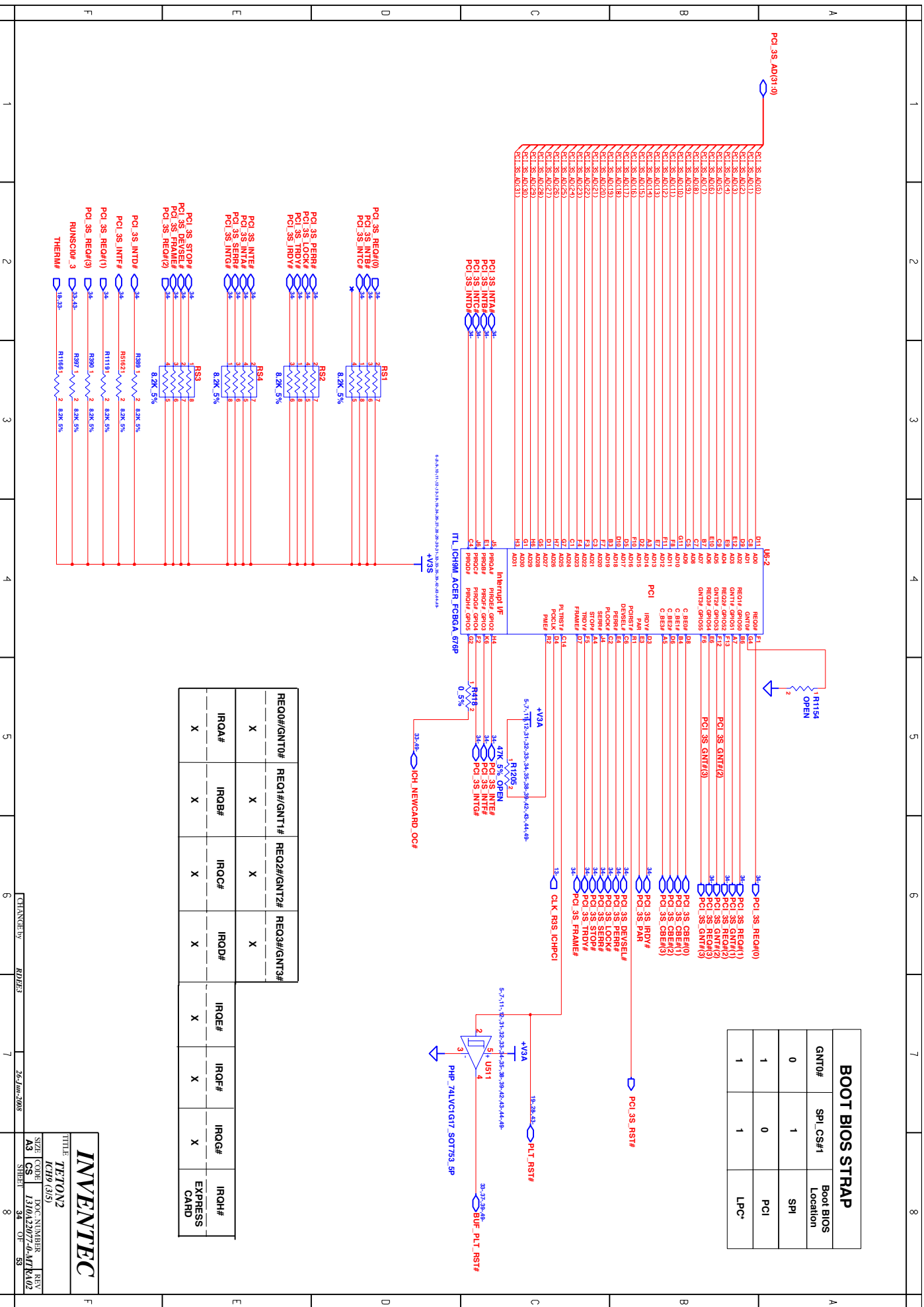


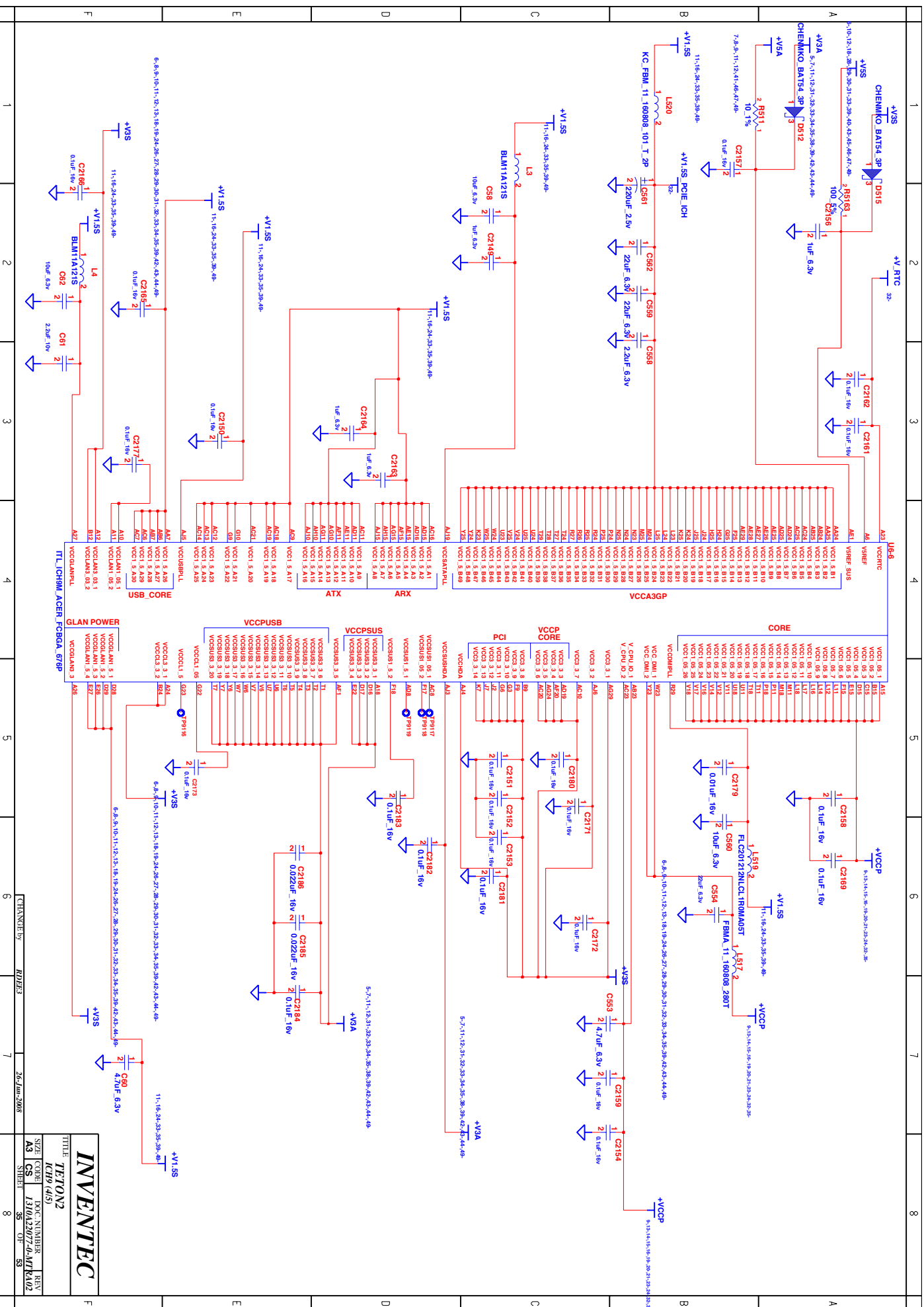


INVENTEC			
TITLE: TETON2			
<i>DP&H/MI</i>			
SIZE	CODE	DOC. NUMBER	REV
A3	CS	1310A2207-0-MTR	R02
SHEET		30	OF 53
8			





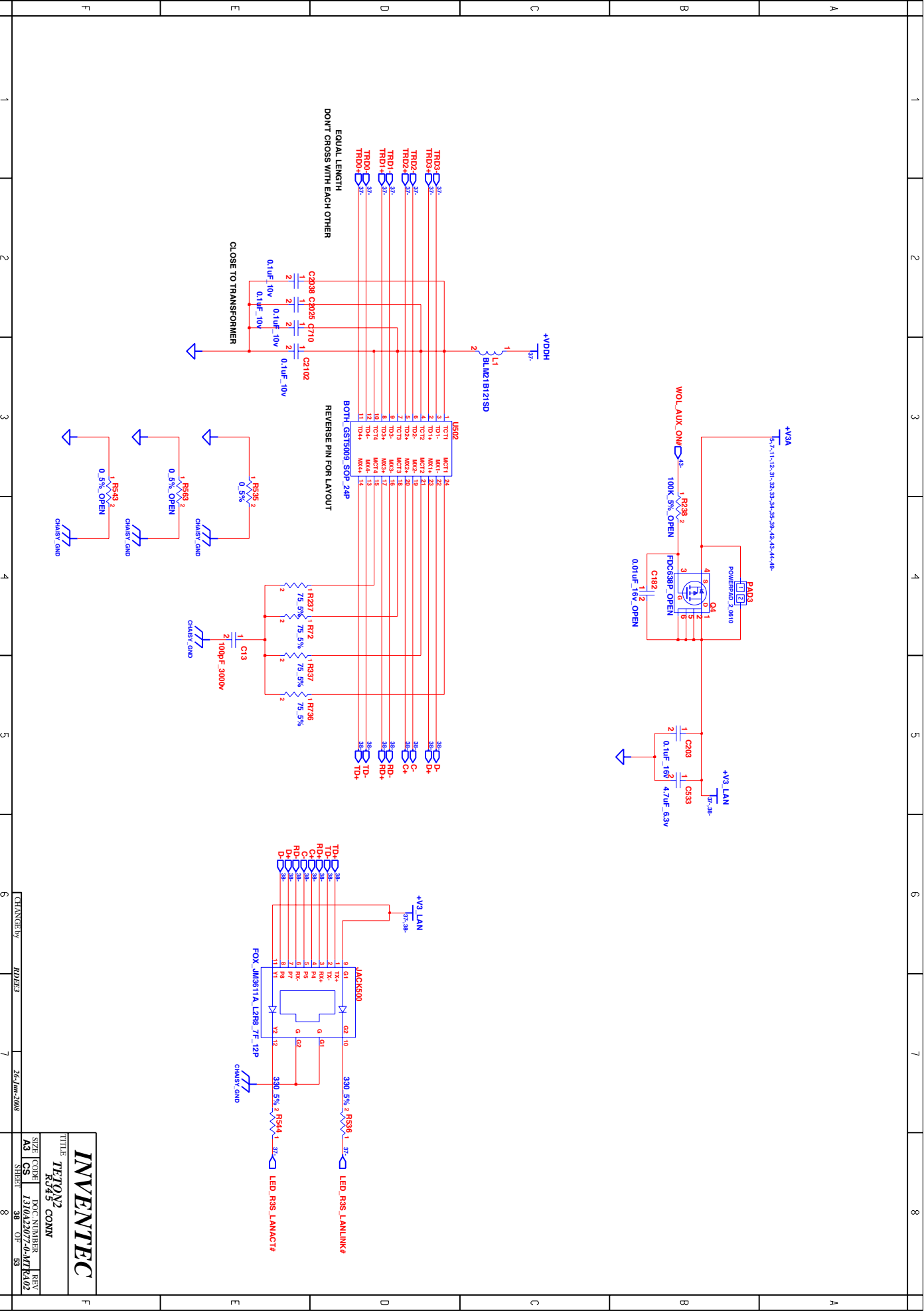


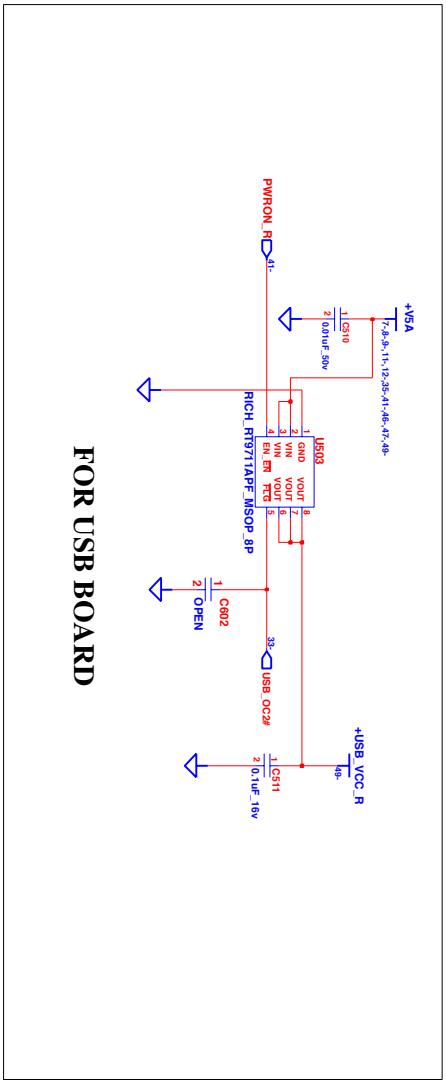


	1	2	3	4	5	6	7	8
A								
B								
C								
D								
E								
F								

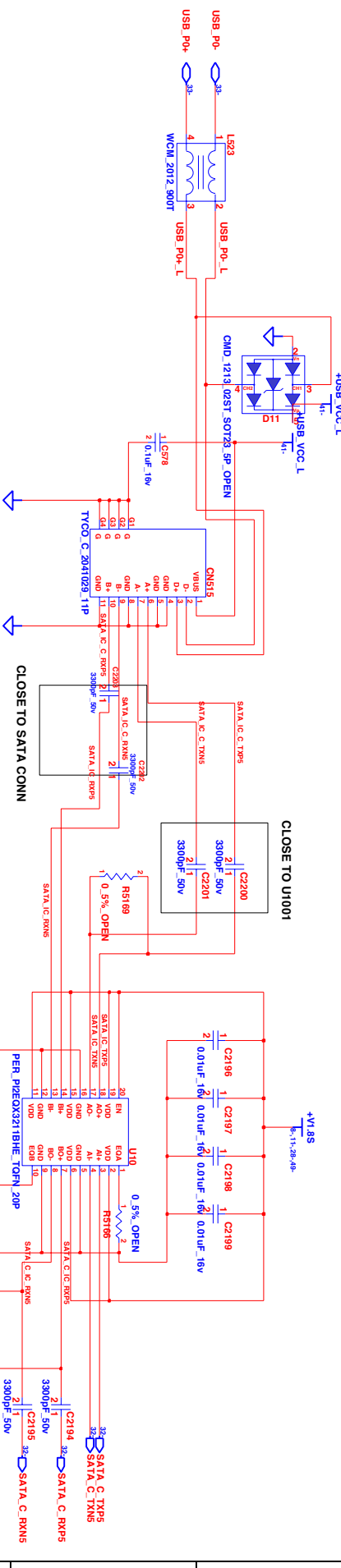
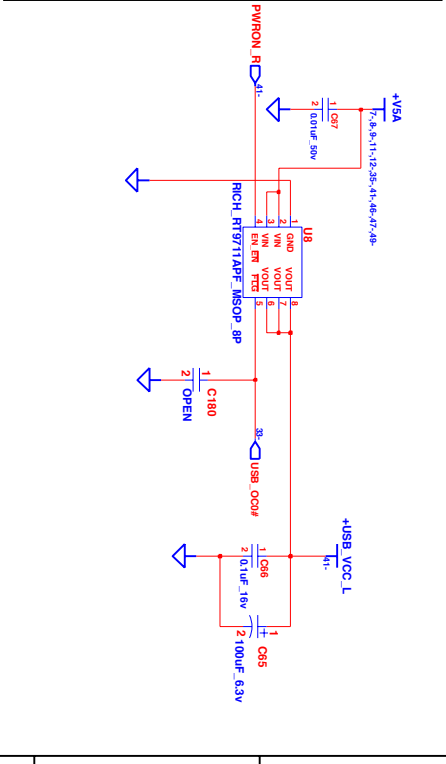
TITLE INVENTEC TETON2 IC99 G/S)	DOC NUMBER REV A3 CS 131042977-0-MTKM02
SHEET 36	OF 59



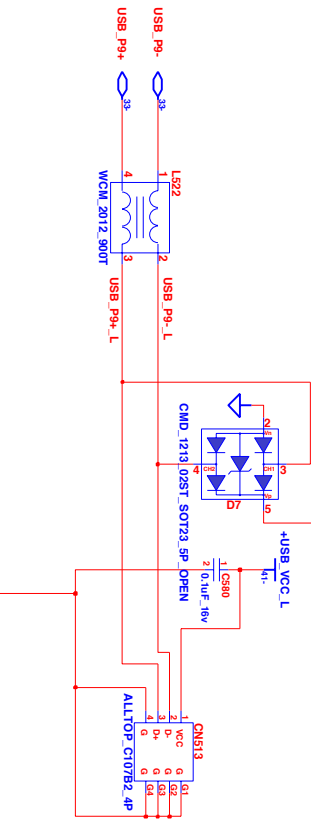




FOR USB BOARD



USB POWER STATE	S0	S3	S5
AC MODE	ON	ON	OFF
DC MODE	ON	ON	OFF



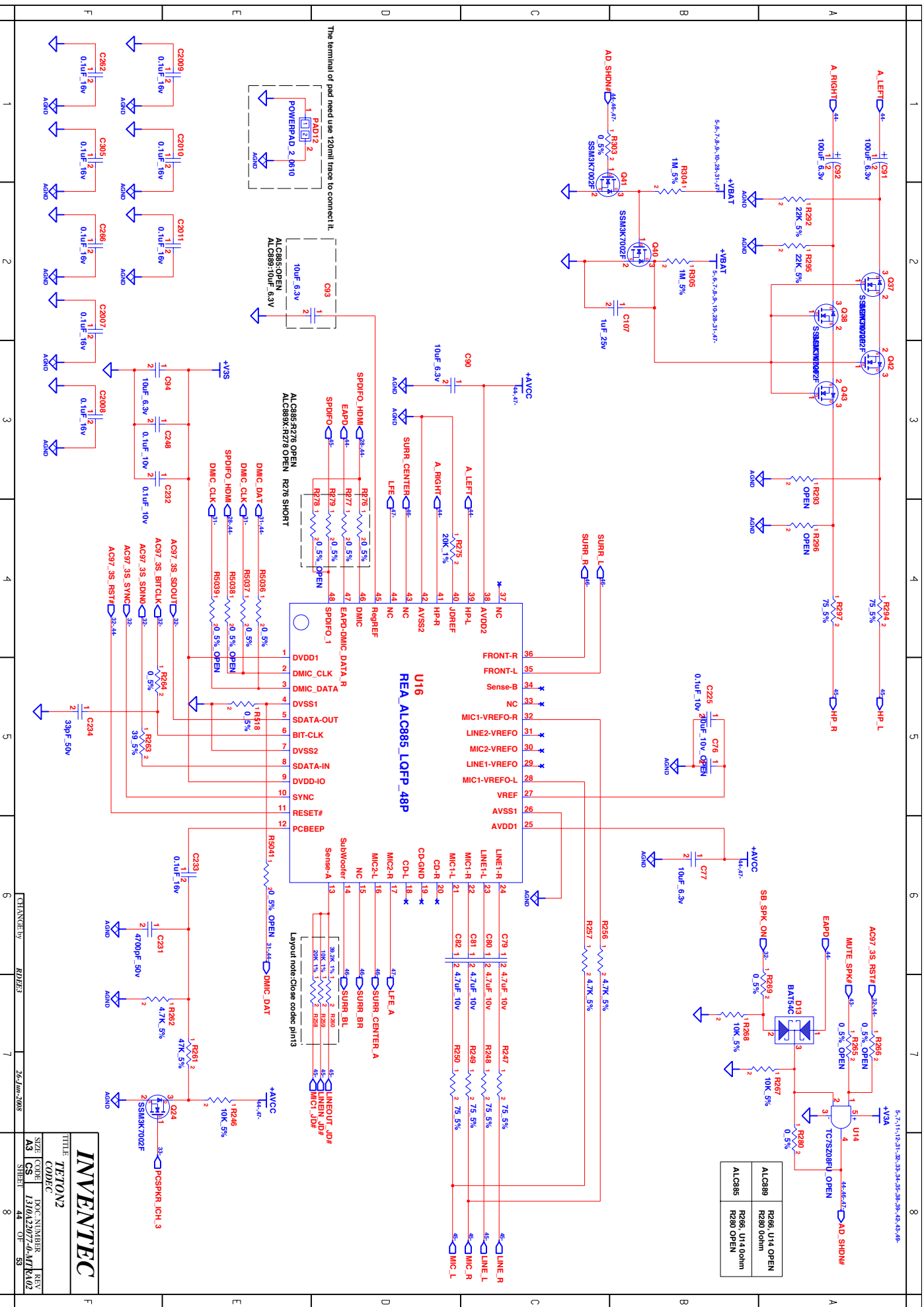
INVENTEC

TE/T0N2

USB & SATA CONN

SIZE CODE DOC NUMBER REV

AS CS 1310A230774-MK102



INVENTEC

TEFON2

CODEC

SIZE CODE

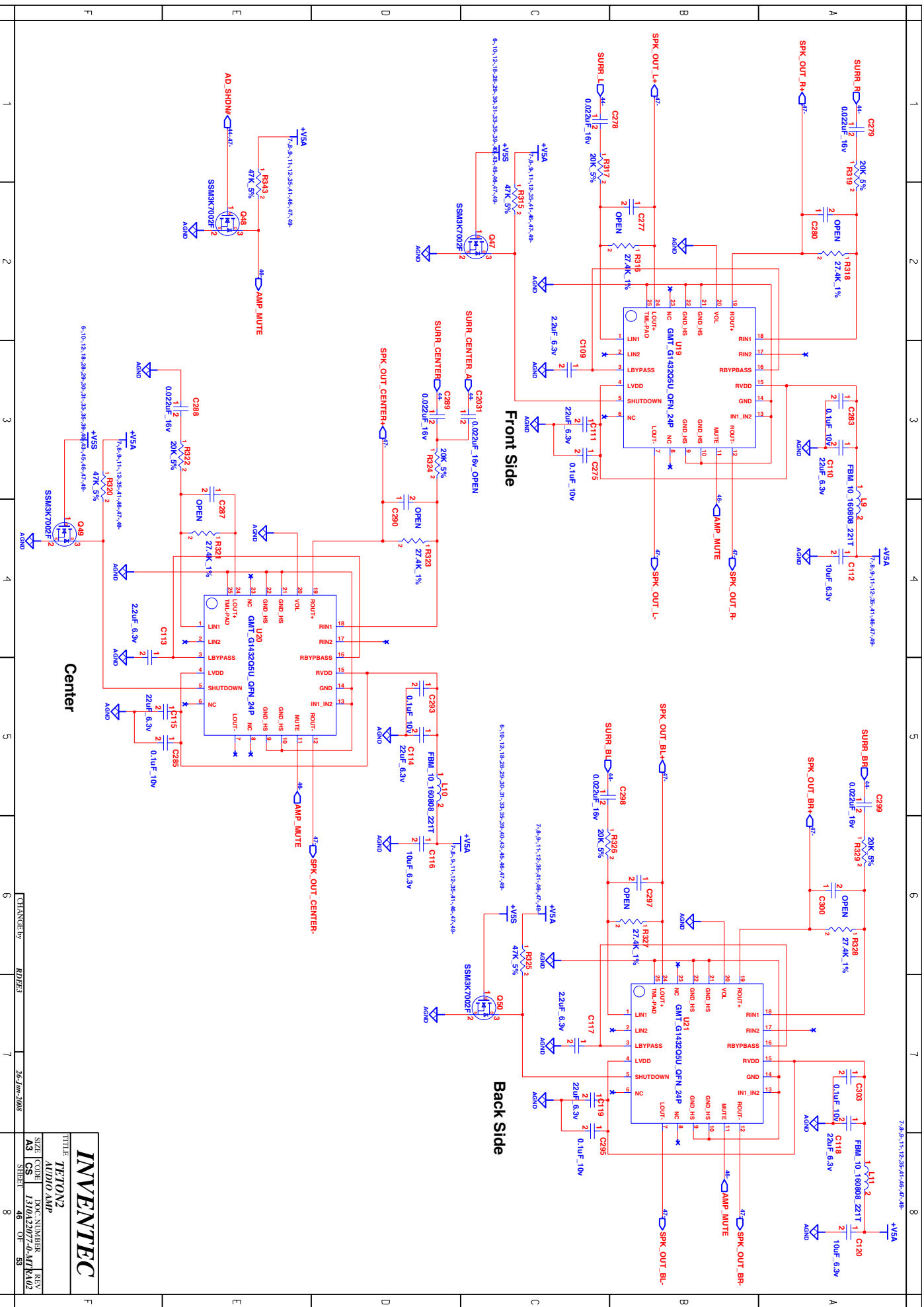
DOC NUMBER

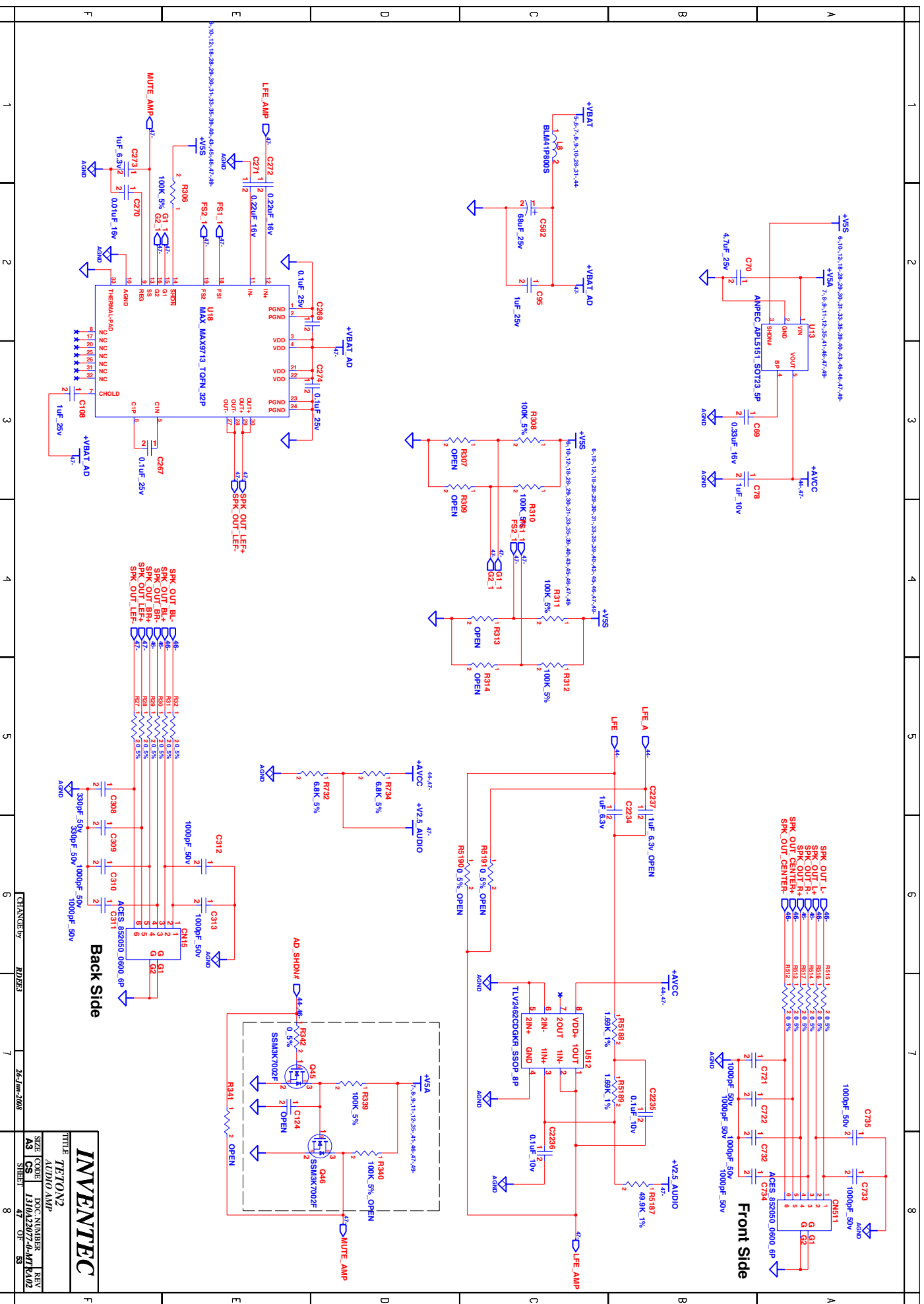
REV

AS CS 1310A2077-4-07

SHR1 44 07 55

8



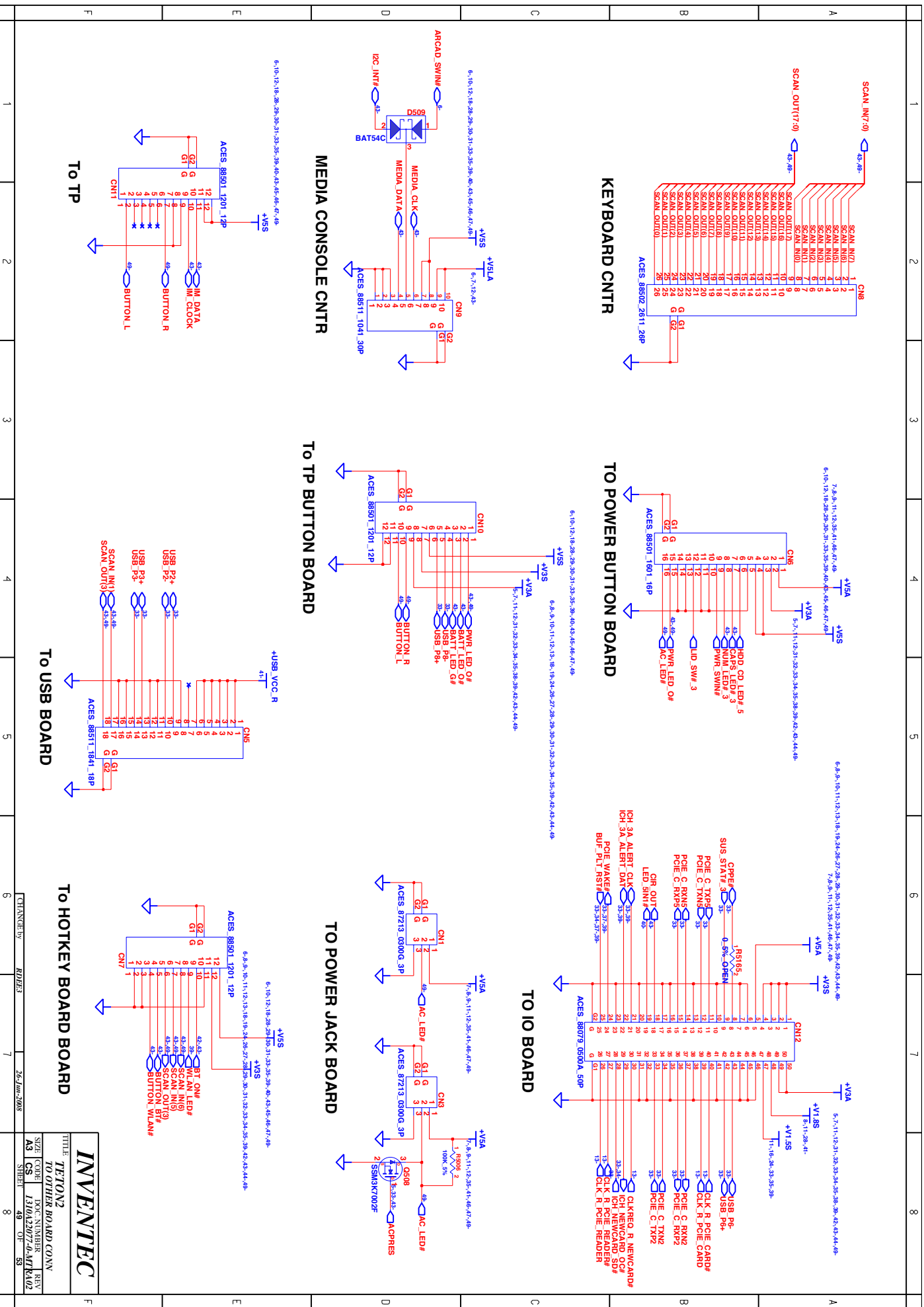


INVENTEC

TITLE		SIZE		CODE		DOC. NUMBER		REV	
TE70N2		A3		CS		131042007-0-MITK102		48	
SCREW&SOLUTION		SHEET		48		OF		55	

CHANGE by: **ROD/3** DATE: **26-Jun-2008**

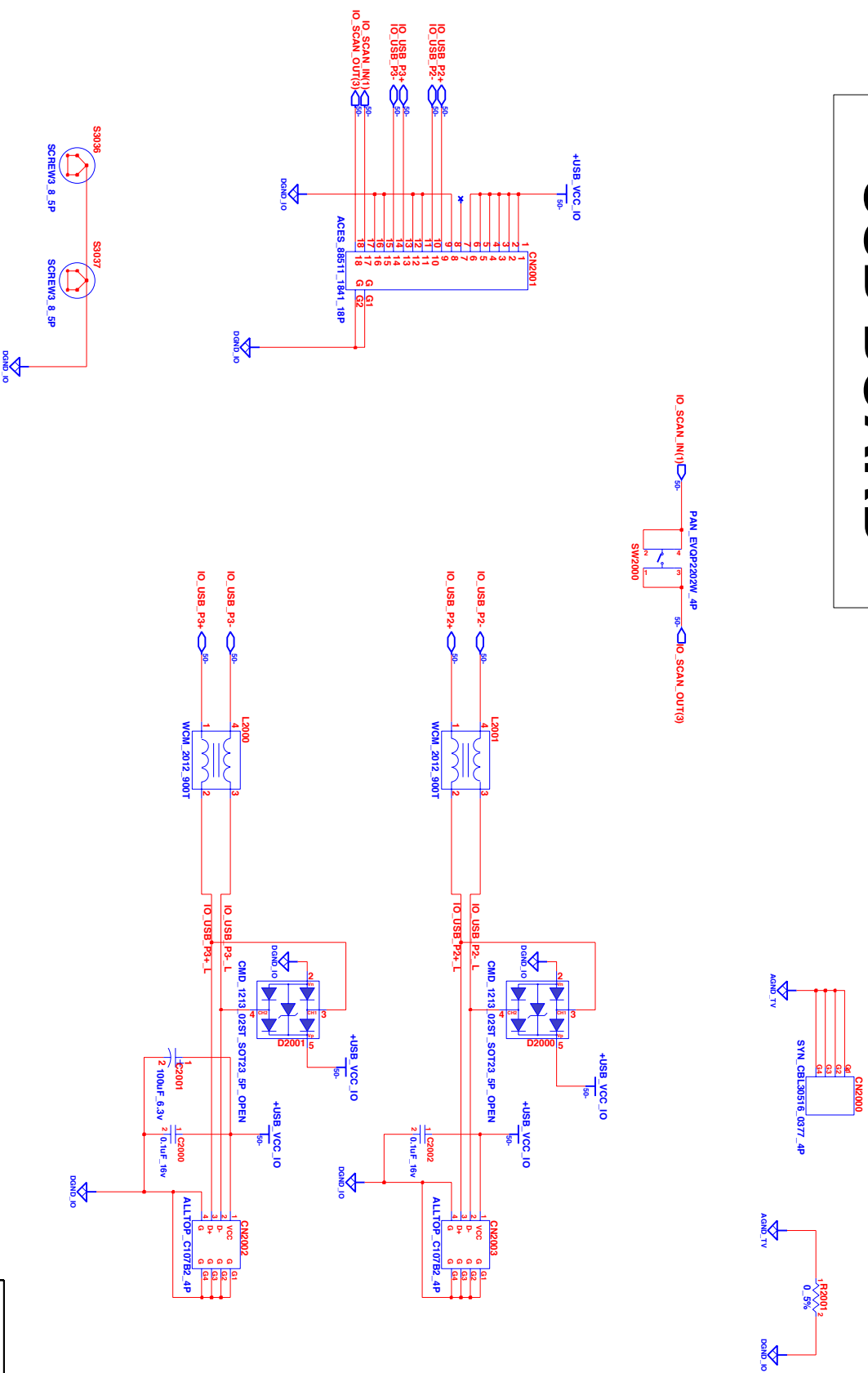
1 2 3 4 5 6 7 8



INVENTEC			
TE/TON2			
TO OTHER BOARD CONN			
SIZE	CODE	DOC NUMBER	REV
A3	CS	1310A2077-0-07	K102
SHEET		49	OF 53

USB BOARD

TV ANT



INVENTEC

TETON2

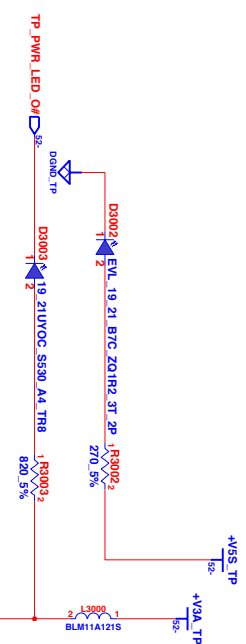
USB BOARD

SIZE CODE DOC NUMBER REV
A3 CS 1310A2007-24-11-102

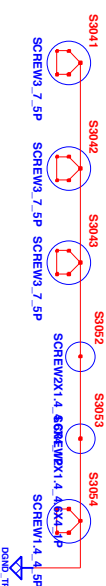
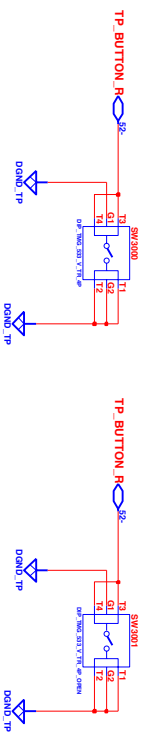
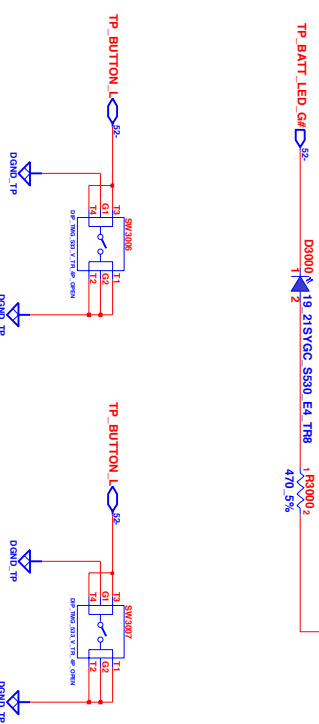
CHANGE BY HDB33 24-11-2008

8

TOUCH PAD BUTTON BOARD



TP_BATT_LED_ON



		<p>INVENTEC</p> <p>TETON2</p> <p>TH BUTTON BOARD</p>
<p>SIZE CODE</p> <p>A3 CS</p>	<p>DOC. NUMBER</p> <p>1310A2077-0b-MR102</p>	<p>REV</p> <p>02</p>
<p>SHEET</p> <p>8</p>	<p>OP</p> <p>33</p>	<p>DATE</p> <p>26-Jun-2008</p>

